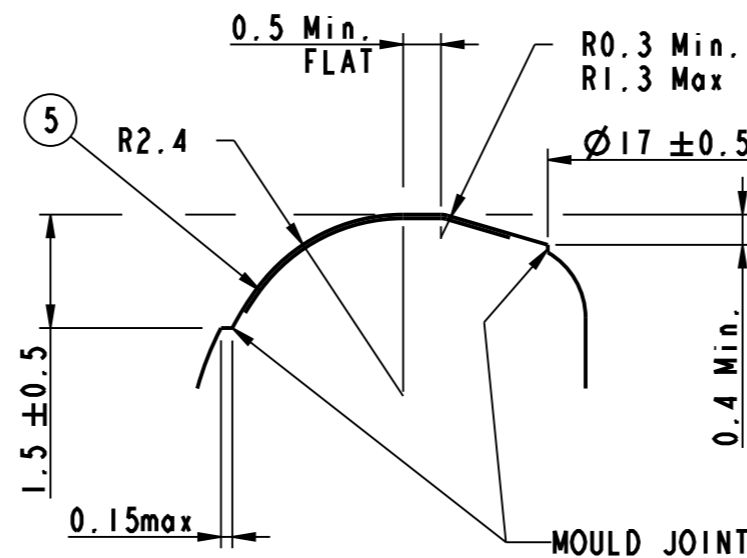
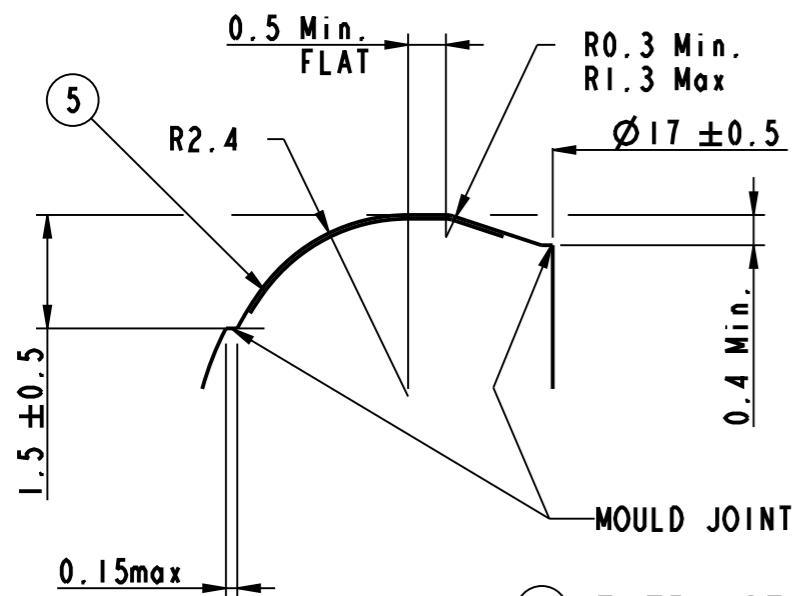
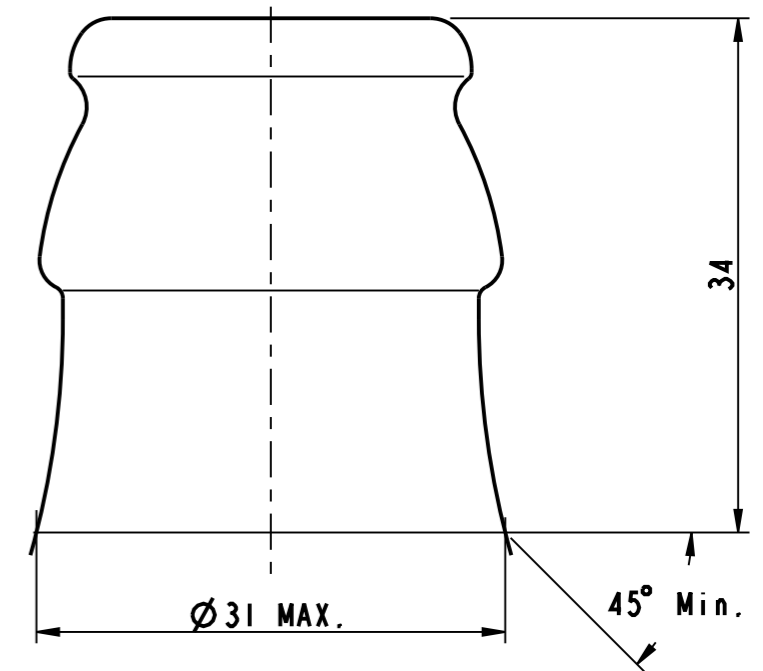


NECK DETAIL
SCALE 2/1



② ENTRANCE BORE DETAILS - SCALE 10/1

NOTE
ONLY THE DIMENSIONS INCLUDING A TOLERANCE
ARE TO BE GUARANTEED

- ① NOMINAL DIAMETER TO SUIT GLASS MANUFACTURED
- ② ALTERNATIVE CONSTRUCTION OF THE ENTRANCE BORE TO SUIT GLASS MANUFACTURED
- ③ THE RADIUS SHOULD LITE BETWEEN 0.5 AND 0.8 AND BE AS NEAR AS POSSIBLE TO 0.5
- ④ CROWN OVALITY MAY NOT EXCEED 50% OF TOLERANCE
- ⑤ SEALING SURFACE —
- ⑥ THE ENTRANCE BORE IS MESURED 3 mm MAX. FROM THE TOP OF THE FINISH
- ⑦ THROUGH BORE : 16 mm DIA

FINISH REFERENCE : NORM CETIE GME 13.01

				COUNTRY FINISH CODE Crown 26 H 180 Special		DE .26 .SPECIAL .H180 .7603 Crown 26 H 180 Special		EUROPE	
				NOTES: THIS DRAWING IS THE PROPERTY OF O-I AND MUST NOT BE REPRODUCED OR DISCLOSED WITHOUT O-I WRITTEN AUTHORIZATION.		FIN.REF.: SPECIAL INSERT: NO			
				ONLY TOLERANCED DIMENSIONS ARE GUARANTEED.		DISPLACEMENT: DATE: 20.11.2013		SCALE: FINISH SAP NUMBER DRAWING NUMBER	
						DRW.: B.S. CHK.: APPR.:		5:1 7603 C1399	
REV.	No.	DESCRIPTION	DATE	DRW.	CHK.				
	1	ENTRANCE BORE DIAMETER CHANGED	27/11/13	B.S.					