



Chromol STAINLESS STEEL MAINTENANCE

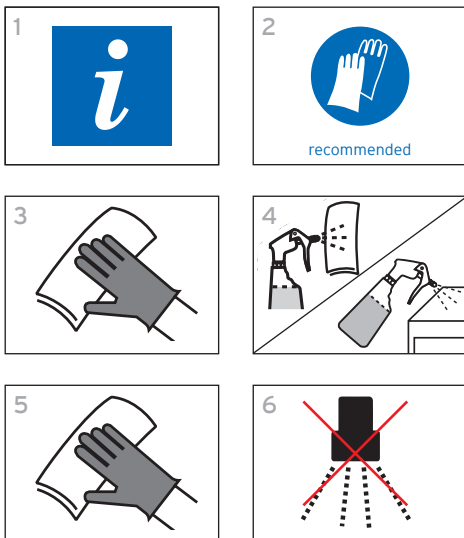
Chromol maintains and protects stainless steel surfaces and leaves a glossy protective film that prevents re-soiling. It gently removes finger prints, water spots and other slightly adhering marks. Water droplets easily roll off and the product prevents re-marking. **Chromol** is easy and economic to use and has a pleasant fragrance.

Application area: For stainless steel maintenance of e.g. cupboards and shelves, walls, elevators, outer paneling of dishwashers and fridges, cookers, cooker hoods.

- **Performance:** Protects stainless steel surfaces from water droplets, soil and finger prints.
- **Efficacy:** Treated surfaces can be cleaned easily and gently.
- **Safety:** A special oil combination forms an uniform protective film on the surface that prevents re-soiling.



USE INSTRUCTIONS



- 1 Check hygiene plan and product label for detailed use information.
- 2 Wear suitable protective clothing when handling the product.
- 3 Before using **Chromol** clean the surface with an all-purpose cleaner.
- 4 Apply **Chromol** undiluted and sparingly on a soft cloth or spray directly onto dry surface.
- 5 Wipe with a lint-free cloth. On brushed surfaces such as extractor hoods, dishwashing machines, elevators etc., rub in direction of the grain.
- 6 No rinse required.

SPECIAL NOTES / INFORMATION

pH Value (conc.): 6.0 - 7.0

For professional use only!

Safety Data Sheet for professional users available on request.

SAFETY INFORMATION

Do not use on hot surfaces and direct food contact surfaces.

For further information and safety instructions see product label and Safety Data Sheet.

STORAGE CONDITIONS

Store between -5 °C and 40 °C in original closed container only.

PACK SIZE

6 x 500 ml