

GLASS IS LIFE™

GI makers of pure, sustainable,
brand-building glass packaging

O-I Sales & Distribution UK Limited

Edinburgh Way
Harlow, Essex
CM20 2UG, United Kingdom
Tel. +44 1279422222

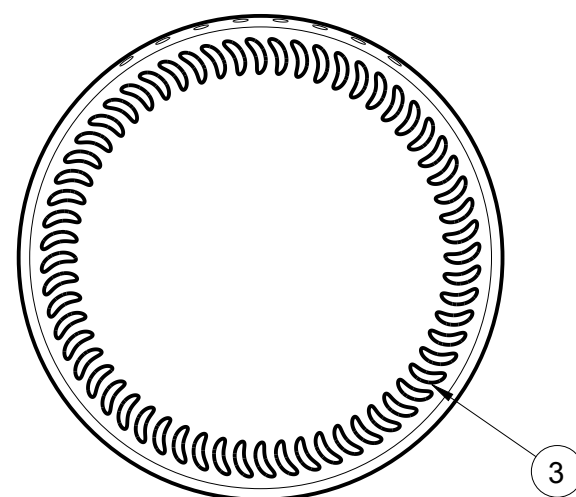
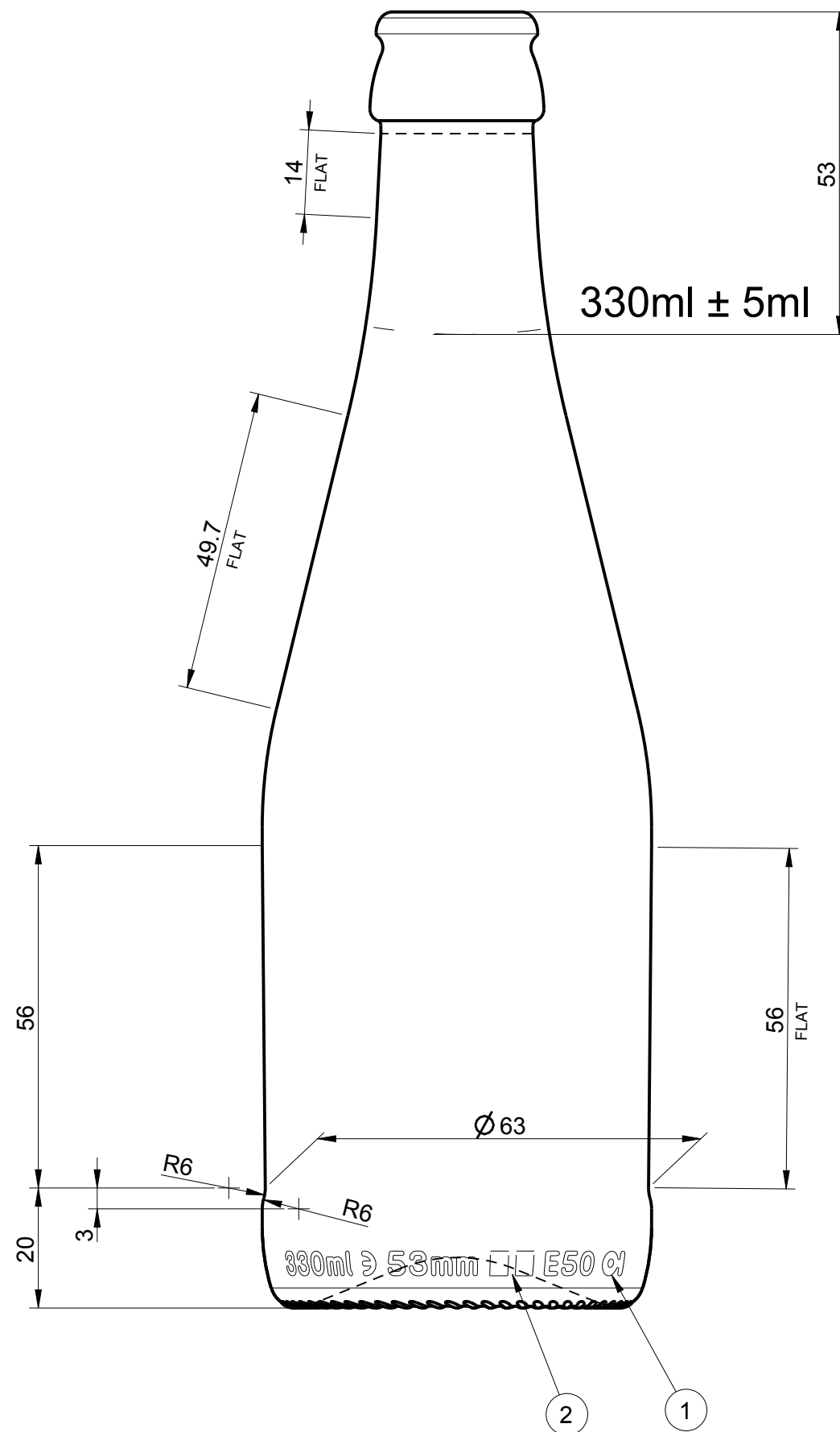
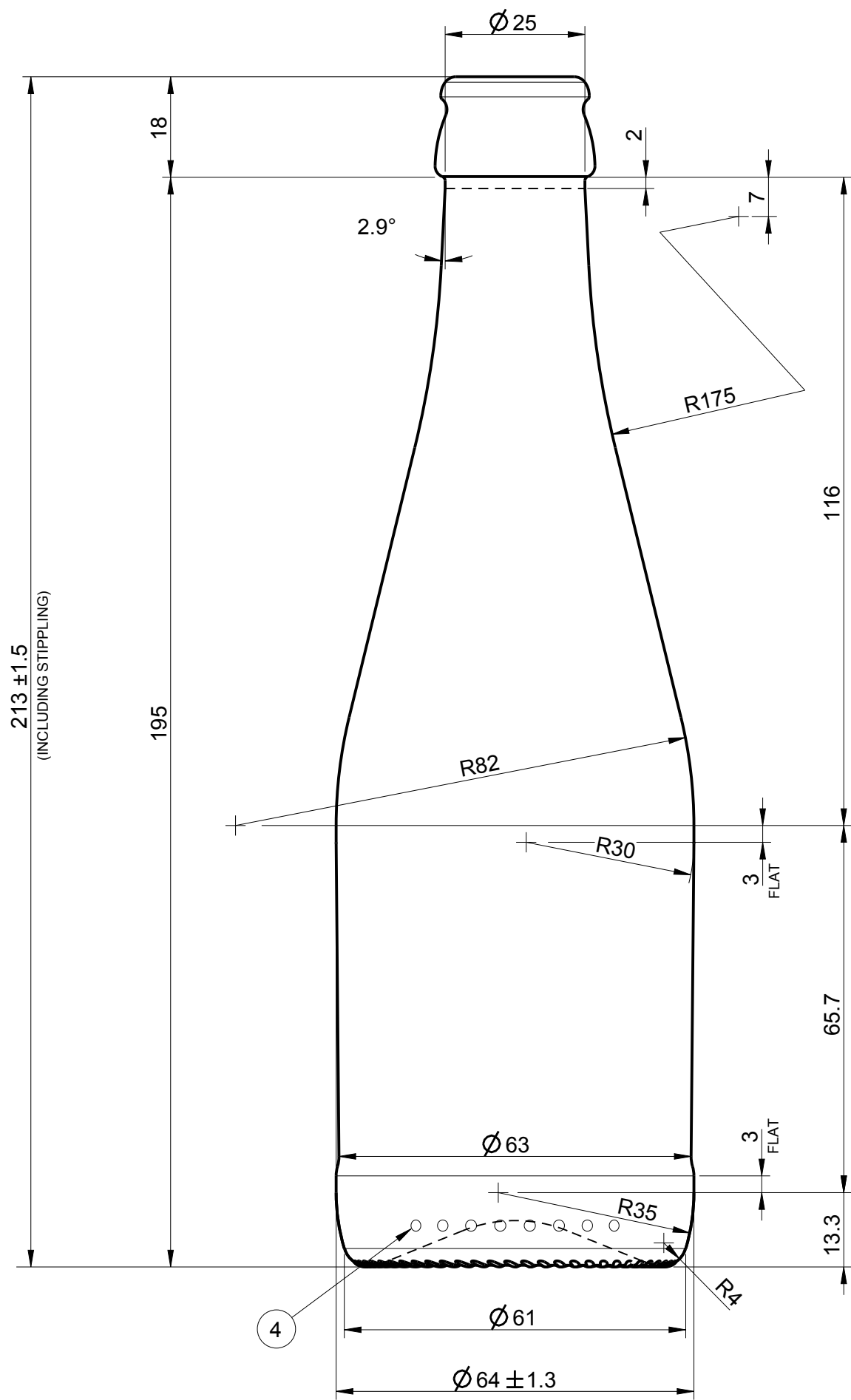
CONTAINER & MOULD ENGINEERING EUROPE

NOTES:
THIS DRAWING IS THE PROPERTY OF O-I AND
MUST NOT BE REPRODUCED OR DISCLOSED
WITHOUT O-I WRITTEN AUTHORIZATION.

DIMENSIONS EXPRESSED IN mm
ONLY TOLERANCED DIMENSIONS ARE GUARANTEED.

MANUFACTURING MARKINGS SHOWN ARE FOR ILLUSTRATIVE
PURPOSES ONLY, ACTUAL MARKINGS ON CONTAINER
MAY DIFFER, DEPENDANT ON LOCAL LEGISLATION.

SEE BGMC TEC 4 FOR TOLERANCE INTERPRETATION.
SEE BGMC TEC 7 FOR CARBONATED BEVERAGES.
HEAT TREATMENT REFERS TO THERMAL PROCESSES OTHER
THAN NORMAL WASHING.
SUBJECT TO INK JET OR LASER CODING BY O-I UNLESS
ADVISED TO THE CONTRARY.



1 = TRADEMARK
2 = CAVITY No.
3 = STIPPLING
THE SHAPE OF STIPPLES IS ONLY AN
INDICATION AND THE CONSTRUCTION IS AT
THE PRODUCTION PLANT DISCRETION.
4 = CAVITY CODE

SCALE 1:1

NNPB ITEM

TENTATIVE

No	DATE	REVISIONS	DESIGN/CHECK
	07/01/15	DESIGN NUMBER WAS BU037, SAP SHAPE CODE ADDED.	LH/DS

HEAT TREATMENT YES	DO NOT SCALE
VERTICAL LOAD 4000N	VACUITY 5.0%
CATEGORY BEER	TILT ANGLE 20.25°
MAX. VERTICALITY TOLERANCE	MEASURING CONTAINER YES ± 6.6ml
FINISH SAP NUMBER 0733	FINISH REF. CETIE GME 13.01 2003
MINIMUM THROUGH BORE 15.5mm	MAX FILLING TUBE Ø
CONTAINER OVERFLOW CAPACITY (BRIMFUL)	
346.5ml APPROX.	
CONTAINER RATED CAPACITY (FILLPOINT)	
330ml ± 5ml	
CONTAINER WEIGHT	
200g APPROX.	
FINISH DESIGNATION EU_26_GME 13.01_H180_0733	MAX GAS VOLUME 3.0
PROCESS RETURNABLE NO	DESIGN REF.
STANDARD ITEM	
330ml ROUND NR BEER BOTTLE	
DESIGNER LH	DATE 29/10/14
CHECKED DS	DATE 29/10/14
DRAWING NUMBER 150007	MOULD/SAP NUMBER 150007