



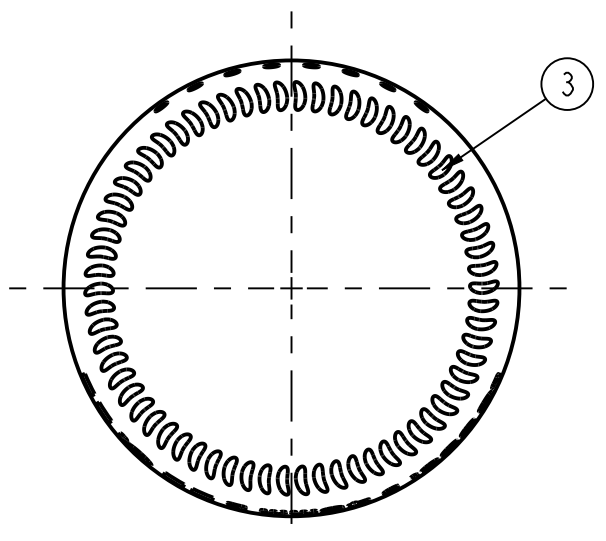
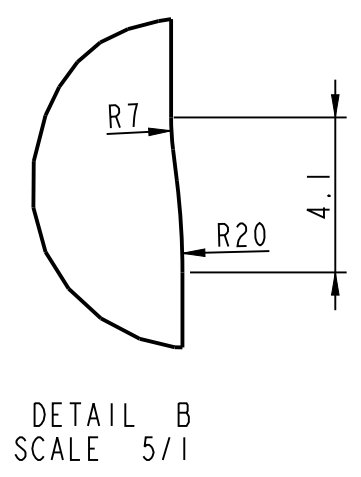
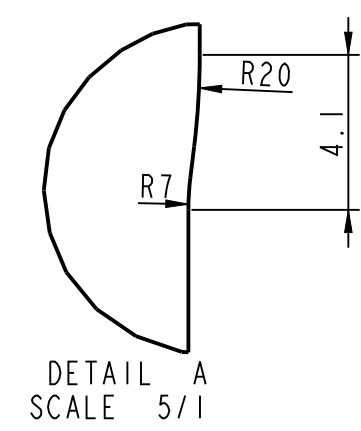
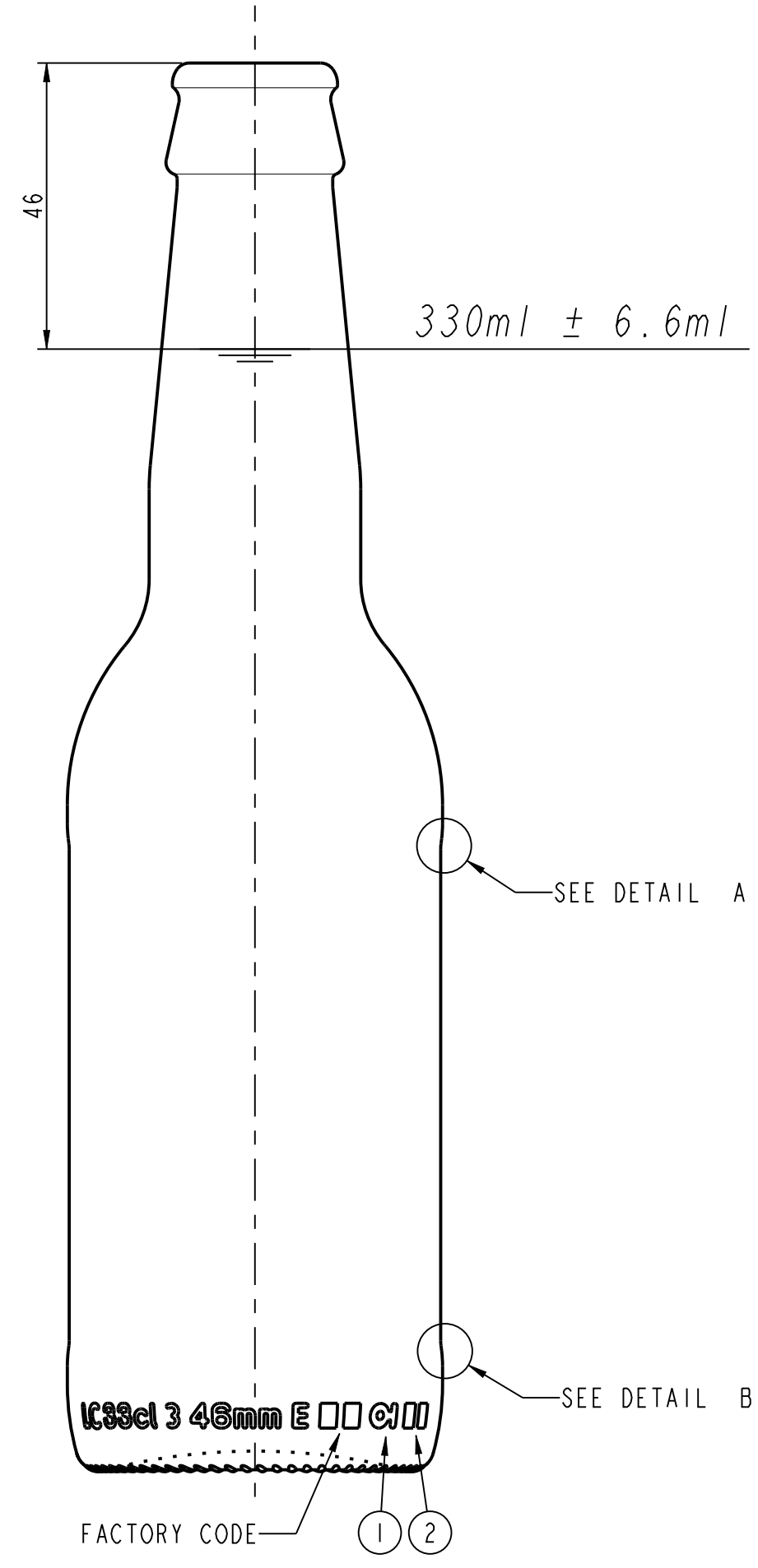
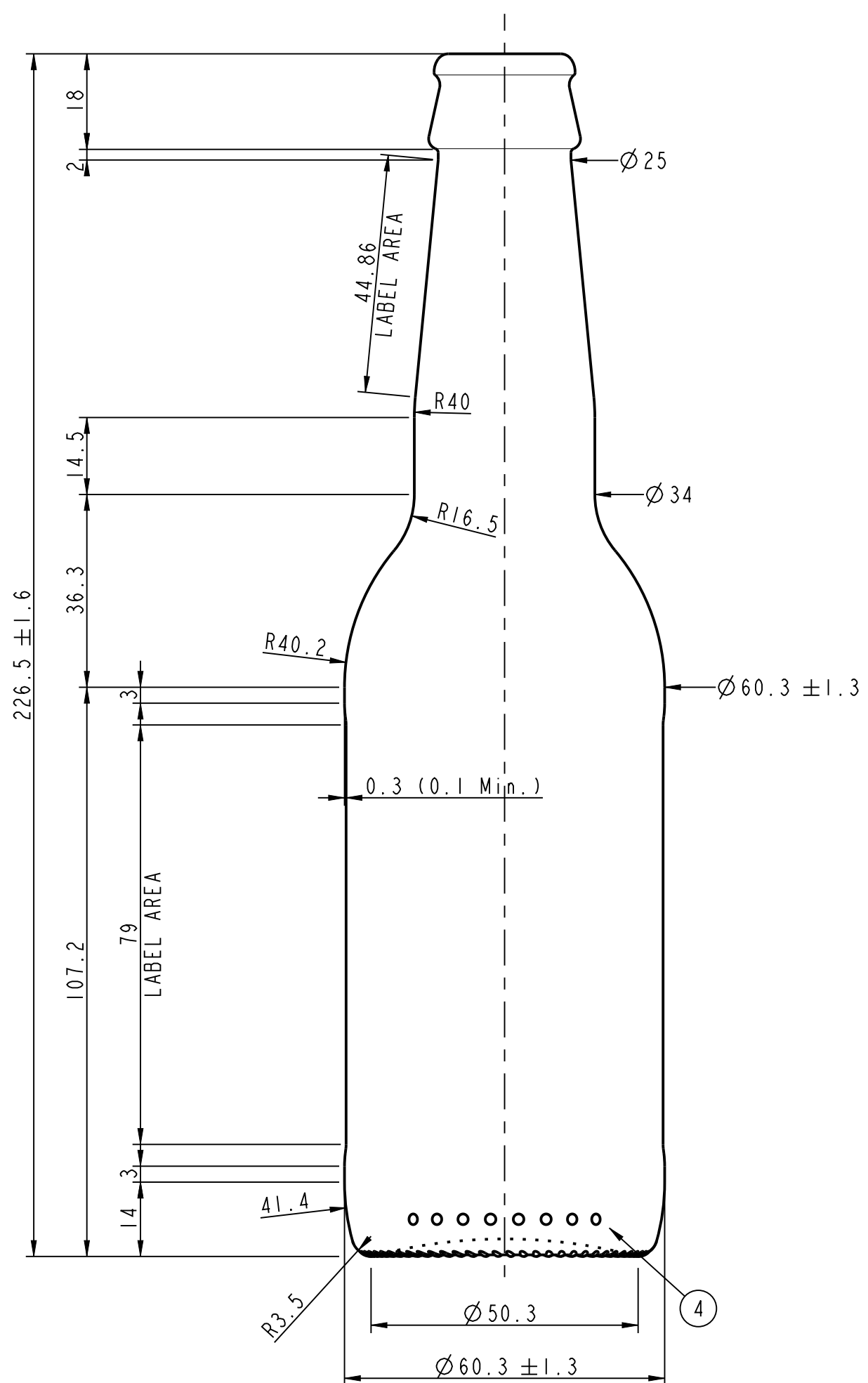
O-I Sales and Distribution Netherlands B.V.  
 Postbus 46  
 3100 AA Schiedam, Netherlands  
 Tel. +31 (0) 10409444

CONTAINER & MOULD ENGINEERING  
 EUROPE

NOTES:  
 THIS DRAWING IS THE PROPERTY OF O-I AND  
 MUST NOT BE REPRODUCED OR DISCLOSED  
 WITHOUT O-I WRITTEN AUTHORIZATION.

DIMENSIONS EXPRESSED IN mm  
 ONLY TOLERANCED DIMENSIONS ARE GUARANTEED.

MANUFACTURING MARKINGS SHOWN ARE FOR ILLUSTRATIVE  
 PURPOSES ONLY, ACTUAL MARKINGS ON CONTAINER  
 MAY DIFFER, DEPENDANT ON LOCAL LEGISLATION.



1 = TRADEMARK  
 2 = CAVITY No.  
 3 = STIPPLING  
 THE SHAPE OF STIPPLES IS ONLY AN  
 INDICATION AND THE CONSTRUCTION IS AT  
 THE PRODUCTION PLANT DISCRETION.  
 4 = CAVITY CODE

SCALE 1:1

CATEGORY BEER		TILT ANGLE 17.65°	
MAX. VERTICALITY TOLERANCE 2.6 mm		MEASURING CONTAINER YES	
FINISH SAP NUMBER 0316		FINISH REF. CETIE GME 13.01 2000	
MINIMUM THROUGH BORE 16.0 mm			
CONTAINER OVERFLOW CAPACITY (BRIMFUL) 347ml APPROX.			
CONTAINER RATED CAPACITY (FILLPOINT) 330ml ± 6.6ml			
CONTAINER WEIGHT 190g APPROX.			
FINISH DESIGNATION NL_26_GME 13.01_H180_0316		MAX GAS VOLUME 6 g CO2/l	
PROCESS NNPB	RETURNABLE NO	DESIGN REF.	
<b>33 cl LN OW LC</b>			
DESIGNER	SK	DATE	11/08/17
CHECKED		DATE	
DRAWING NUMBER 170605		MOULD/SAP NUMBER 170605	

No	DATE	REVISIONS	DESIGN/CHECK
5	05-11-19	Finish Designation corrected.Dimension Label Area added	DO
4	05-03-18	Shoulder height added	WD
3	24-01-18	Released for production	WD
2	10-10-17	Label boundary modified	SK
1	11-09-17	170605_1 released for sampling	SK