

GLASS IS LIFE™

O-I makers of pure, sustainable,
brand-building glass packaging

O-I Sales and Distribution Netherlands B.V.

Postbus 46
3100 AA Schiedam, Netherlands
Tel. +31 (0) 104094444

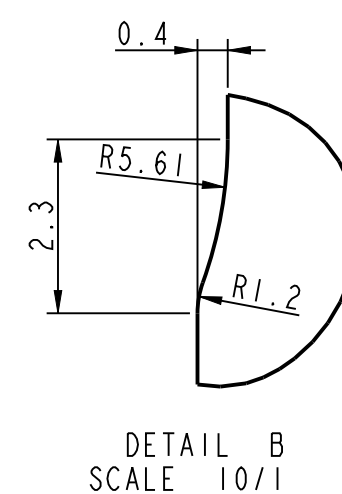
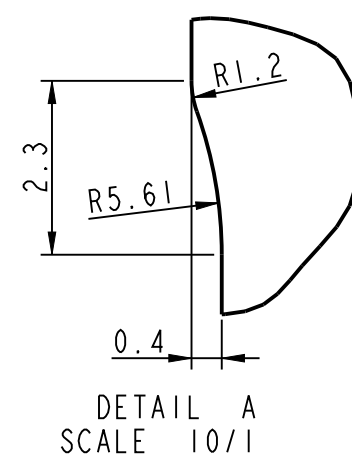
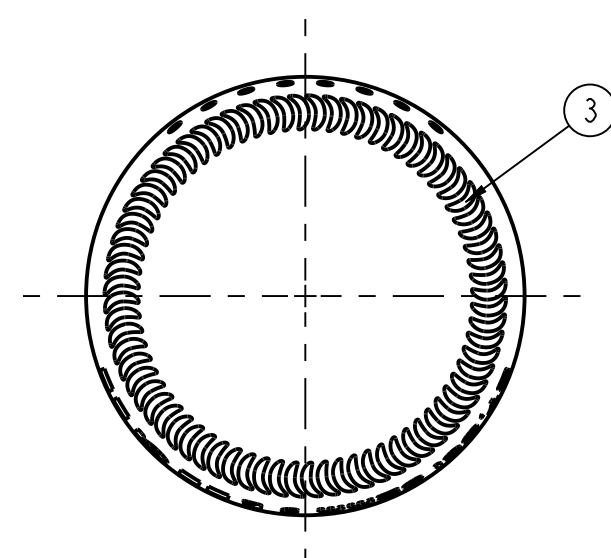
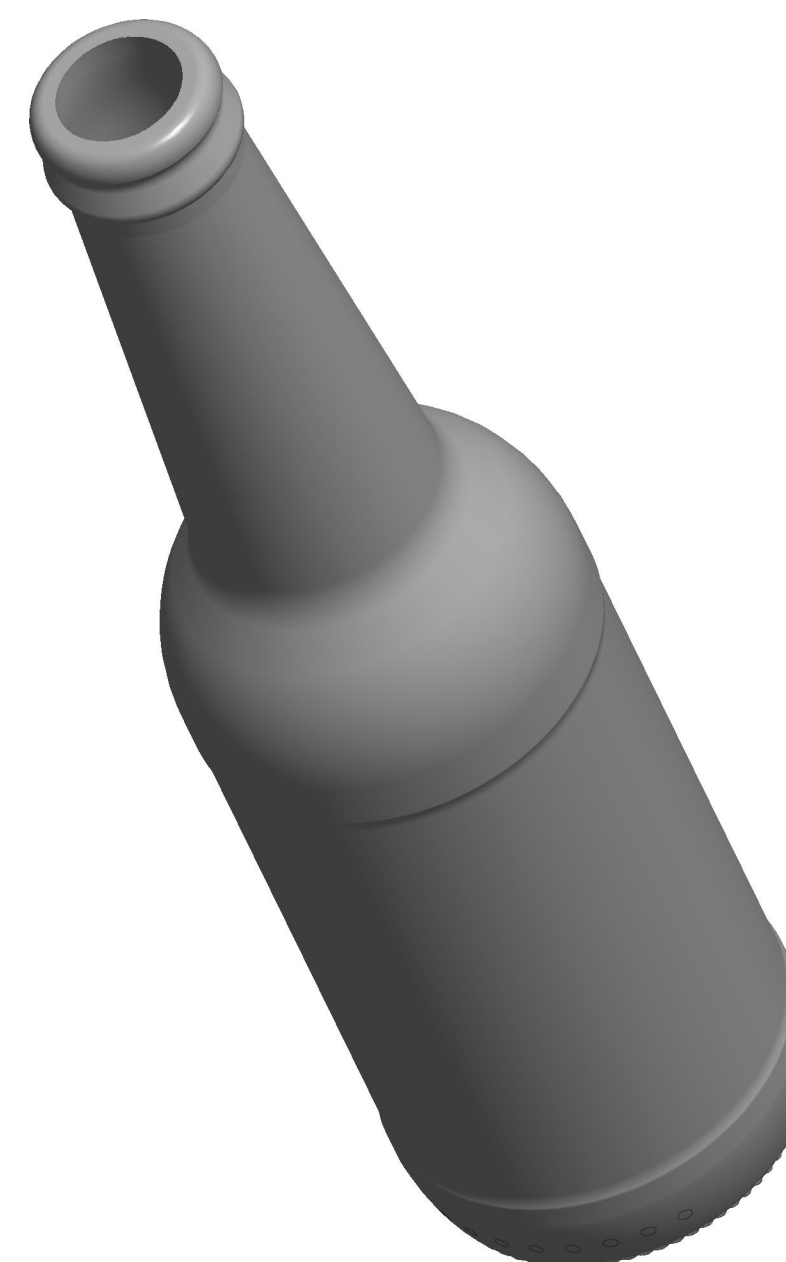
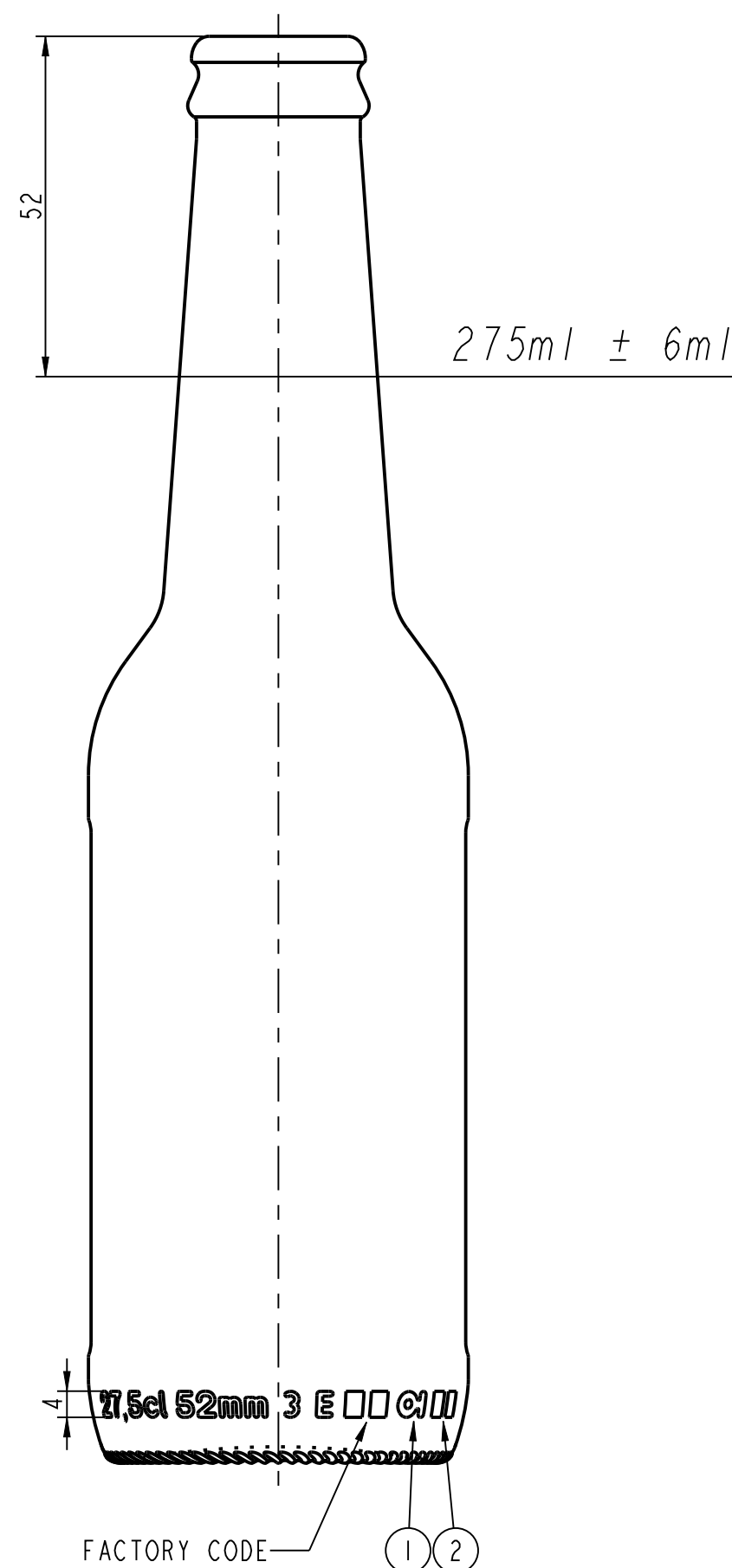
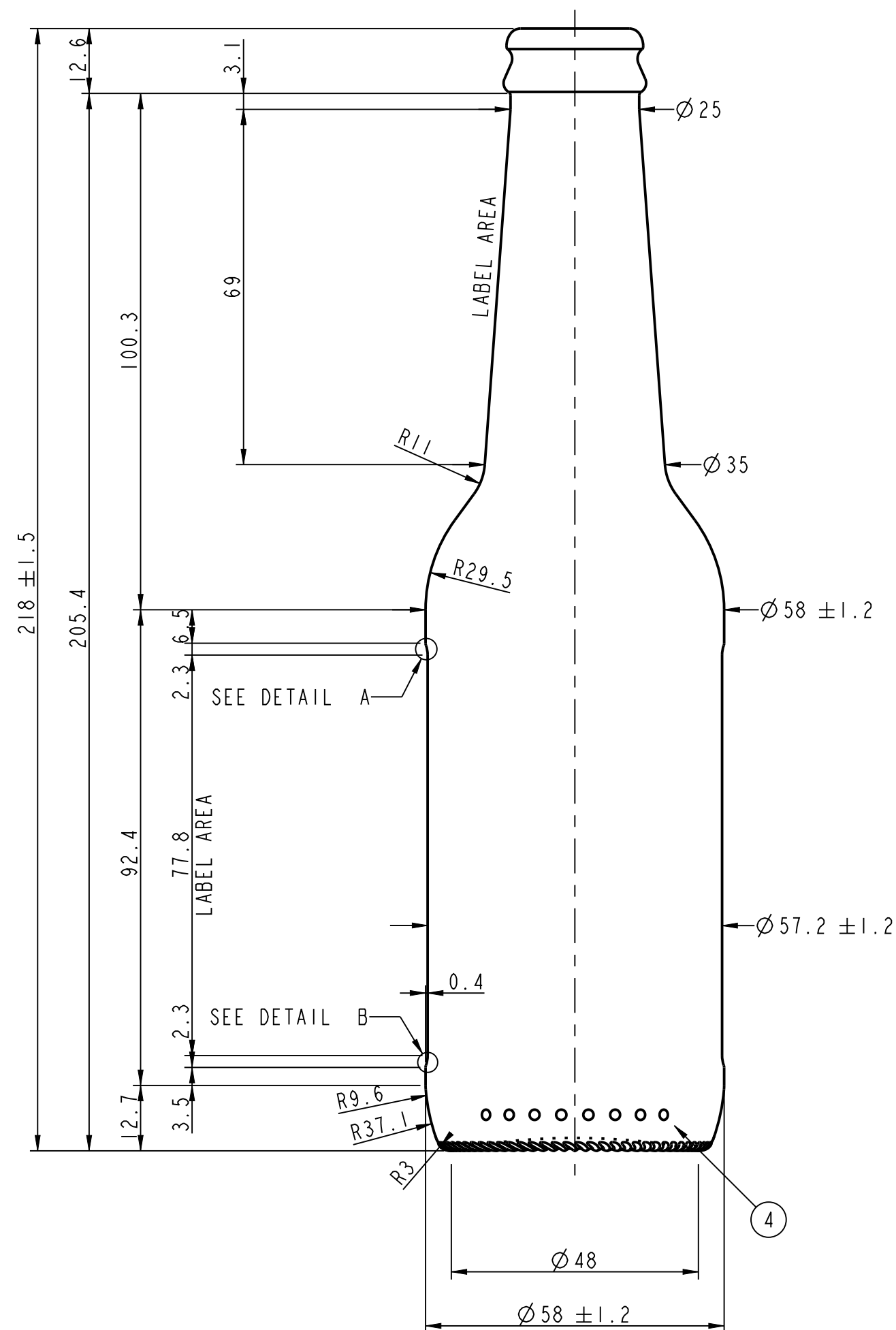
CONTAINER & MOULD ENGINEERING

EUROPE

NOTES:
THIS DRAWING IS THE PROPERTY OF O-I AND
MUST NOT BE REPRODUCED OR DISCLOSED
WITHOUT O-I WRITTEN AUTHORIZATION.

DIMENSIONS EXPRESSED IN mm
ONLY TOLERANCED DIMENSIONS ARE GUARANTEED.

MANUFACTURING MARKINGS SHOWN ARE FOR ILLUSTRATIVE
PURPOSES ONLY, ACTUAL MARKINGS ON CONTAINER
MAY DIFFER, DEPENDANT ON LOCAL LEGISLATION.



1 = TRADEMARK
2 = CAVITY No.
3 = STIPPLING
THE SHAPE OF STIPPLES IS ONLY AN
INDICATION AND THE CONSTRUCTION IS AT
THE PRODUCTION PLANT DISCRETION.
4 = CAVITY CODE

SCALE 1:1

CATEGORY BEER	TILT ANGLE 17.35°
MAX. VERTICALITY TOLERANCE 2.5 mm	MEASURING CONTAINER YES
FINISH SAP NUMBER 0716	FINISH REF. CETIE GME 13.02 2003
MINIMUM THROUGH BORE 15.5 mm	

CONTAINER OVERFLOW CAPACITY (BRIMFUL)	292ml APPROX.
---------------------------------------	---------------

CONTAINER RATED CAPACITY (FILLPOINT)	275ml ± 6ml
--------------------------------------	-------------

CONTAINER WEIGHT	209g APPROX.
------------------	--------------

FINISH DESIGNATION EU_26_GME 13.02_H126_0716	MAX GAS VOLUME
---	----------------

PROCESS NNPB	RETURNABLE NO	DESIGN REF.
-----------------	------------------	-------------

275 ml LN OW

DESIGNER	WD	DATE	31/07/17
CHECKED		DATE	

DRAWING NUMBER 170566	MOULD/SAP NUMBER 003176
--------------------------	----------------------------

No	DATE	REVISIONS	DESIGN/CHECK
	21-07-17	DRAWING UPDATE OF 1469-07	WD