



ENGINEERING EMOTIONS

O-I Netherlands B.V.  
Sporstraat 7  
3112 HD Schiedam, Netherlands  
Tel. +31 (0) 104094001

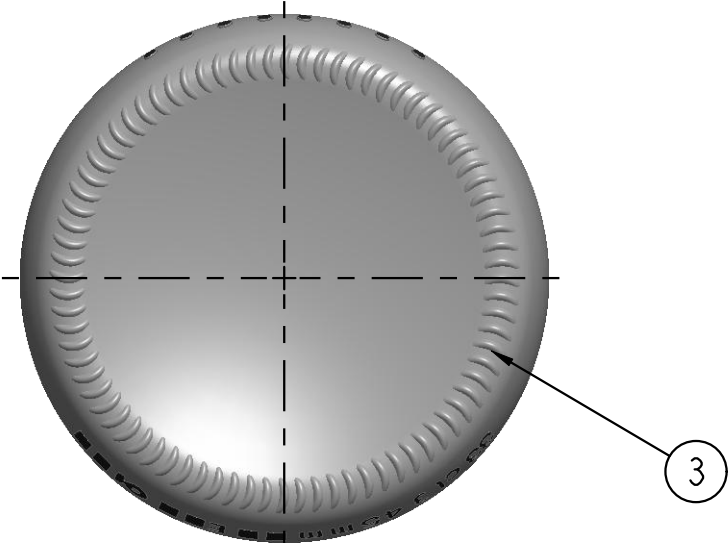
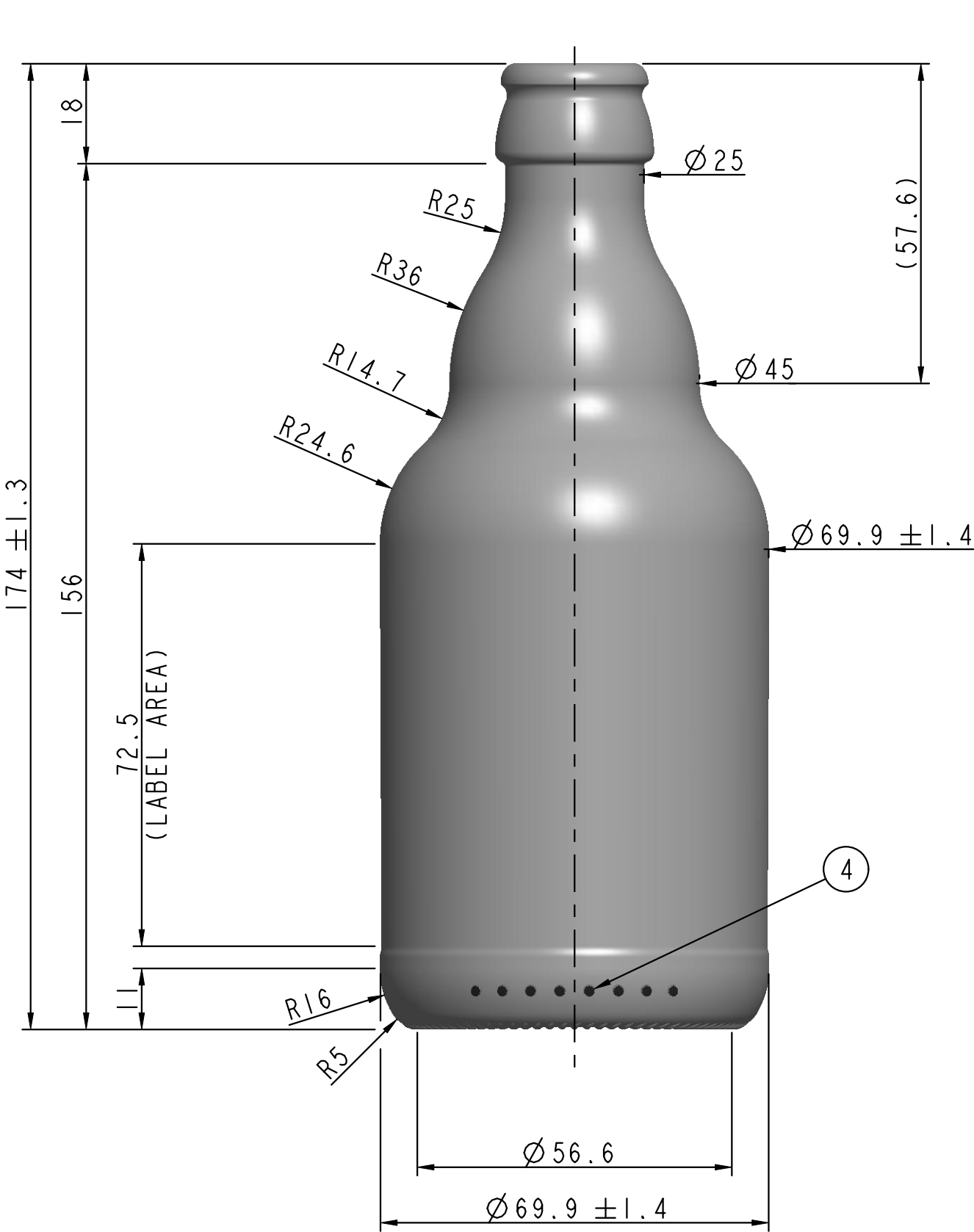
CONTAINER & MOULD DESIGN

EUROPE

NOTES:  
THIS DRAWING IS THE PROPERTY OF O-I AND  
MUST NOT BE REPRODUCED OR DISCLOSED  
WITHOUT O-I WRITTEN AUTHORIZATION.

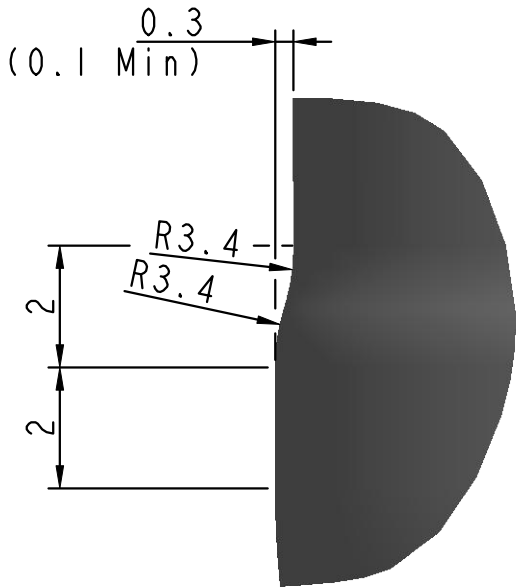
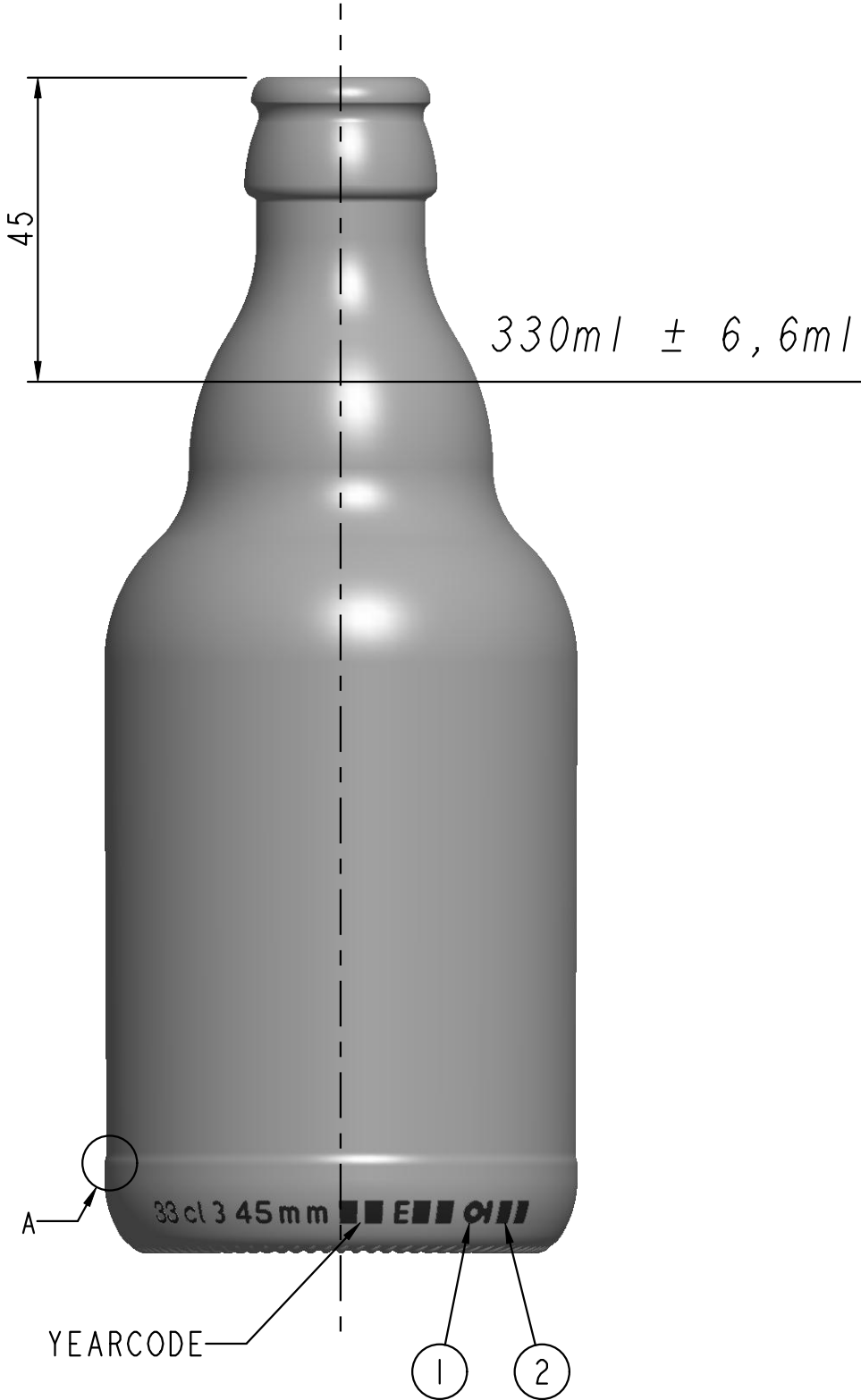
DIMENSIONS EXPRESSED IN mm  
ONLY TOLERANCED DIMENSIONS ARE GUARANTEED.

MANUFACTURING MARKINGS SHOWN ARE FOR ILLUSTRATIVE  
PURPOSES ONLY, ACTUAL MARKINGS ON CONTAINER  
MAY DIFFER, DEPENDANT ON LOCAL LEGISLATION.

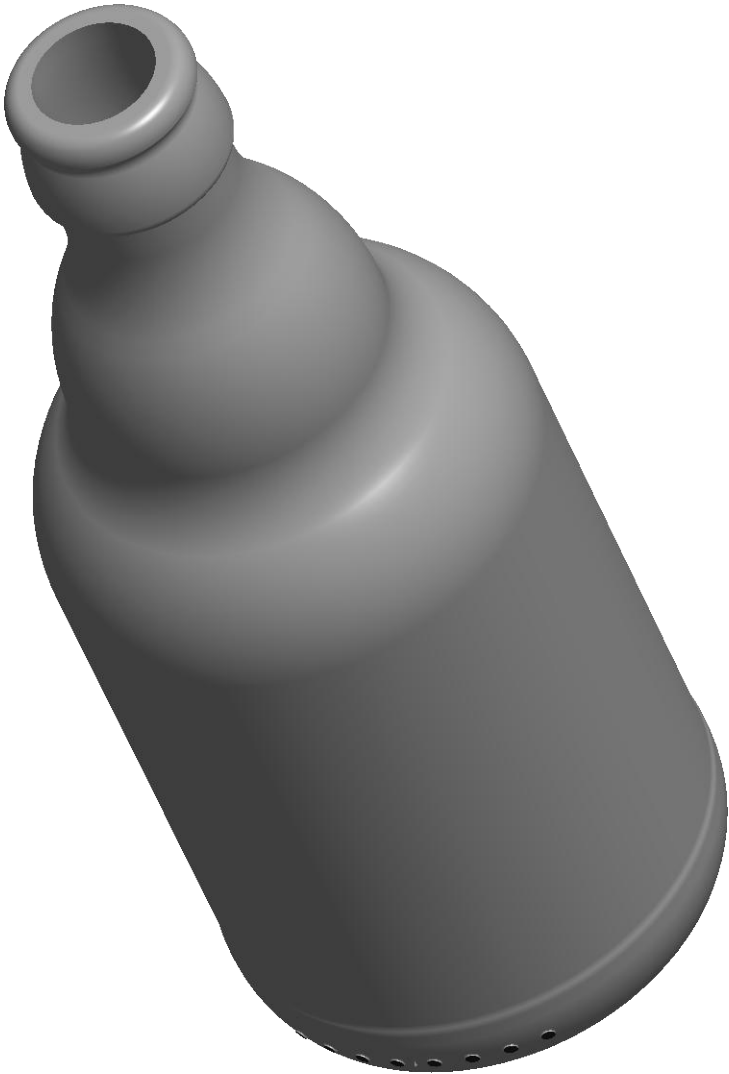


1 = TRADEMARK  
2 = CAVITY No.  
3 = STIPPLING  
THE SHAPE OF STIPPLES IS ONLY AN  
INDICATION AND THE CONSTRUCTION IS AT  
THE PRODUCTION PLANT DISCRETION.  
4 = CAVITY CODE

SCALE 1:1



DETAIL A  
SCALE 8/1



|  |                   |                                 |          |
|--|-------------------|---------------------------------|----------|
| CATEGORY<br>BEER                               |                   | TILT ANGLE<br>25.6°             |          |
| MAX. VERTICALITY TOLERANCE<br>2.1 mm           |                   | MEASURING CONTAINER<br>YES      |          |
| FINISH SAP NUMBER<br>0733                      |                   | FINISH REF.<br>EN 12821 2020-02 |          |
| MINIMUM THROUGH BORE<br>15.5 mm                |                   | MAX FILLING TUBE Ø<br>14 mm     |          |
| CONTAINER OVERFLOW CAPACITY (BRIMFUL)          |                   |                                 |          |
| 345ml APPROX.                                  |                   |                                 |          |
| CONTAINER RATED CAPACITY (FILLPOINT)           |                   |                                 |          |
| 330ml ± 6,6ml                                  |                   |                                 |          |
| CONTAINER WEIGHT                               |                   |                                 |          |
| 255g APPROX.                                   |                   |                                 |          |
| FINISH DESIGNATION<br>EU_26_EN 12821_H180-0733 |                   | MAX GAS VOLUME<br>9 g CO2 / L   |          |
| PROCESS<br>NNPB                                | RETURNABLE<br>YES | DESIGN REF.                     |          |
| 33cl Steinie 2 RB                              |                   |                                 |          |
| DESIGNER                                       | C. A.             | DATE                            | 24/01/24 |
| CHECKED  | M. M.             | DATE                            | 10/05/24 |
| DRAWING NUMBER<br>240054                       |                   | SHAPE NUMBER<br>240054          |          |

|    |      |           |              |
|----|------|-----------|--------------|
|    |      |           |              |
|    |      |           |              |
|    |      |           |              |
| No | DATE | REVISIONS | DESIGN/CHECK |