



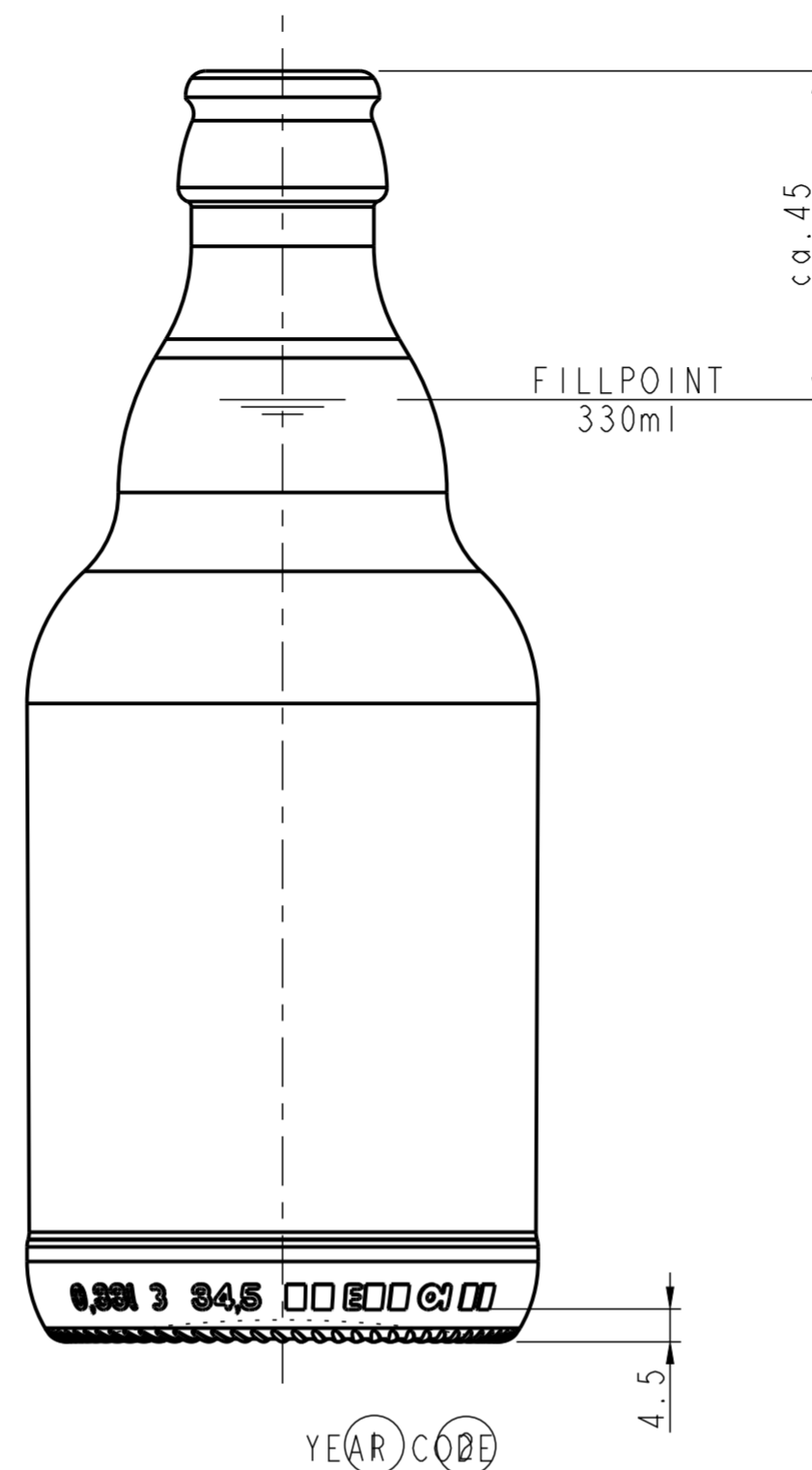
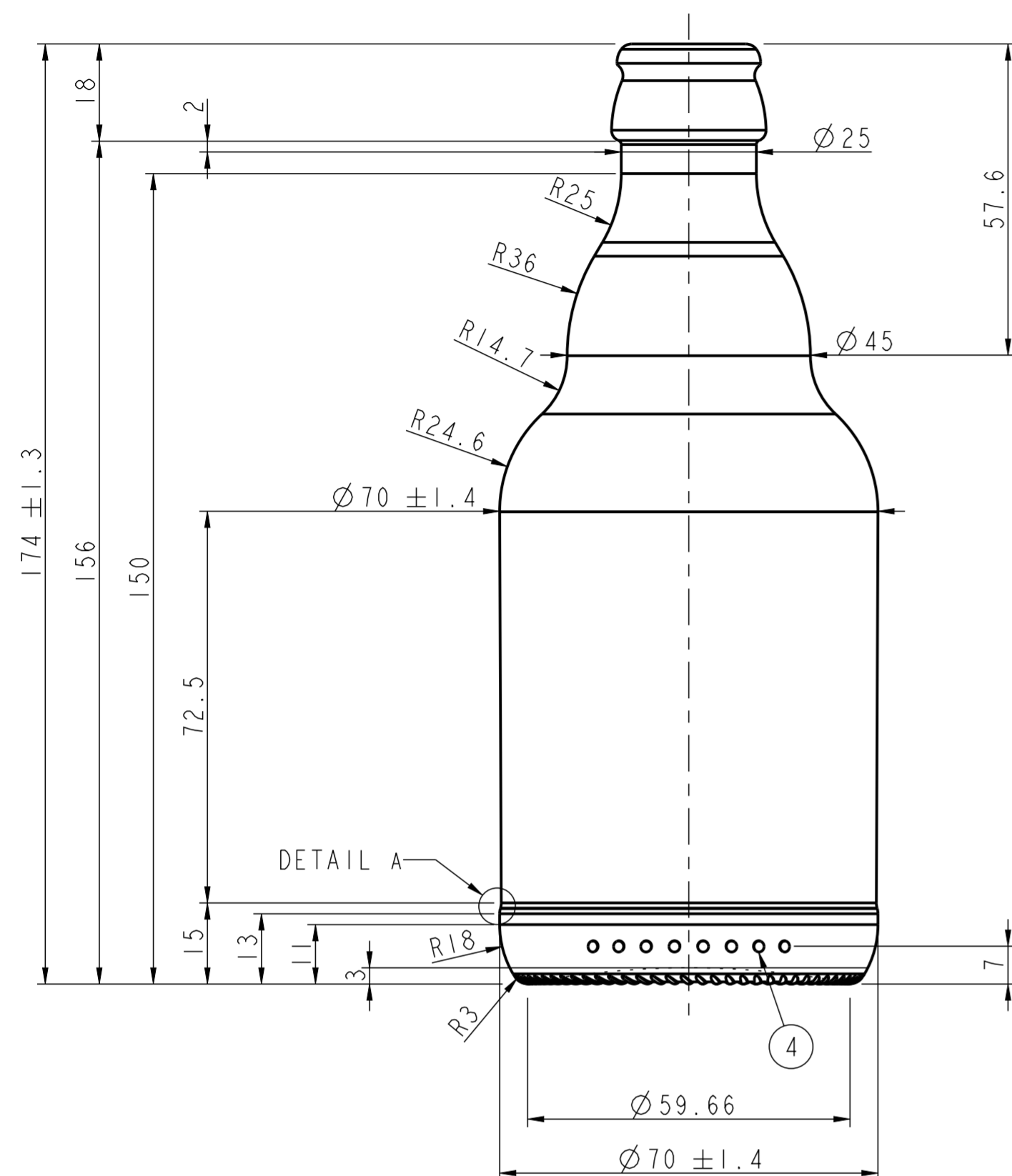
ENGINEERING EMOTIONS

O-I Germany GmbH & CO. KG

Goethestrasse 75
40237 Düsseldorf, Germany
Tel. +49 0211/2809-0
+49 0211/932-0

CONTAINER & MOULD DESIGN

EUROPE

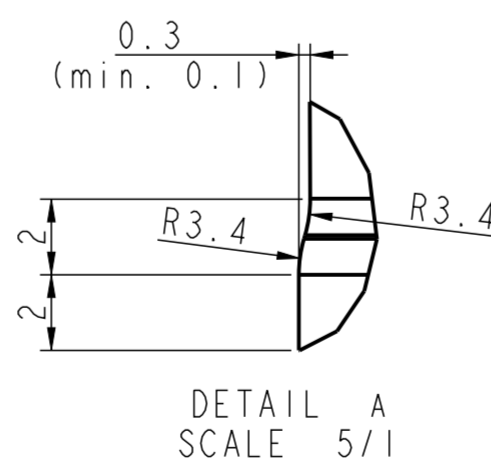
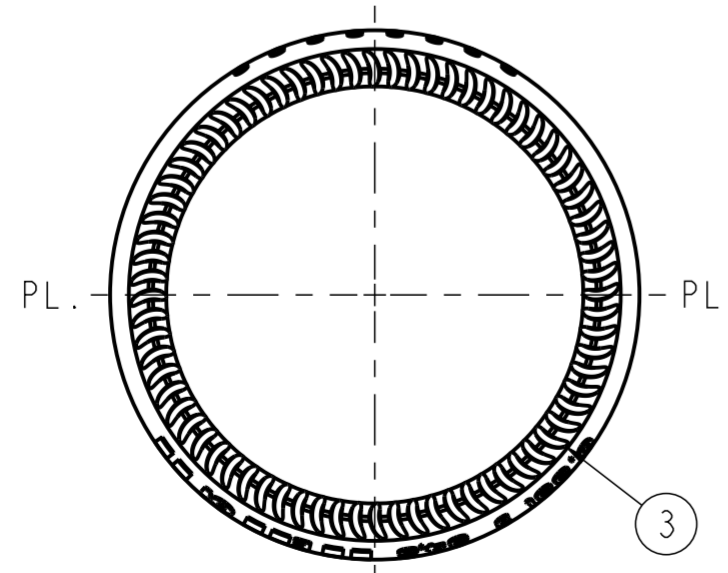


THIS DIMENSION CAN BE USED FOR THE ADJUSTMENT OF THE FILLING MACHINE. THE BRIMFUL CAPACITY IS BINDING!

NOTES:
THIS DRAWING IS THE PROPERTY OF O-I AND MUST NOT BE REPRODUCED OR DISCLOSED WITHOUT O-I WRITTEN AUTHORIZATION.

DIMENSIONS EXPRESSED IN mm
ONLY TOLERANCED DIMENSIONS ARE GUARANTEED.

MANUFACTURING MARKINGS SHOWN ARE FOR ILLUSTRATIVE PURPOSES ONLY, ACTUAL MARKINGS ON CONTAINER MAY DIFFER, DEPENDANT ON LOCAL LEGISLATION.



1 = TRADEMARK
2 = CAVITY No.
3 = STIPPLING
THE SHAPE OF STIPPLES IS ONLY AN INDICATION AND THE CONSTRUCTION IS AT THE PRODUCTION PLANT DISCRETION.
4 = CAVITY CODE

SCALE 1:1

CATEGORY BEER		TILT ANGLE 26°	
MAX. VERTICALITY TOLERANCE 2.1 mm		MEASURING CONTAINER YES	
FINISH SAP NUMBER 0733		FINISH REF. CETIE GME 13.01 2003	
MINIMUM THROUGH BORE 15.5 mm		MAX FILLING TUBE Ø 14 mm	
CONTAINER OVERFLOW CAPACITY (BRIMFUL) 345ml ± 7ml			
CONTAINER RATED CAPACITY (FILLPOINT) 330ml APPROX.			
CONTAINER WEIGHT 255g APPROX.			
FINISH DESIGNATION EU_26_GME 13.01_H180_0733		MAX GAS VOLUME 9 gr/l CO2	
PROCESS NNPB	RETURNABLE YES	DESIGN REF. A11529/1	

0,33l MW Bierflasche Steinie

No	DATE	REVISIONS	DESIGN/CHECK
6	15.03.24	tolerance for container overlow capacity corrected	T.M.
5	13.03.24	changed back from fillpoint to brimful container	T.M.
4	01.02.24	process type changed to NNPB and CO2-Level adjusted	C.He
3	24.02.22	fillpoint and lettering modified according to request	F.Ars
2	07.09.22	lettering adjusted according to request	C.He
1	21.01.22	adjusted sequence of heel lettering to NL/SOP	T.M.

DESIGNER	C.He	DATE	13/01/22
CHECKED		DATE	
DRAWING NUMBER 220014		SHAPE NUMBER 016103	